

## Suntone™ Pigment Red 146 Technical Data Sheet

### Product Description:

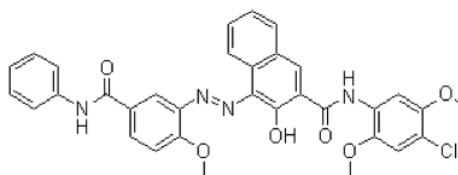
Trade Name	Suntone
Product	Pink FBB
C.I. Name	Pigment Red 146
C.I. No	12485
CAS NO	5280-68-2
Chemical Class	MONO AZO
EU No.	226-103-2
Hue	Red

Mass tone : 5%

Tint tone: 1:10



### Chemical Structure :



### Physical Properties:

Oil Absorption	≤50 cc
Bulk Density	1.4 gm/cm <sup>3</sup>
Ph	6-7
Sieve Residue on 45 μ	<1%
Moisture Content	Max.1%

### Application:

Paint	Decorative Paints/Industrial Paints/Emulsion Paints
Ink	Water based, Gravure based inks
Textiles	Textile Printing

### Fastness Properties:

Light (Full)	Light (Reduced)	Heat: 180°C/20min	Water	5%HCL	5% NaOH	Ethyl Alcohol	Ethyl Acetate	Xylene	MEK	Mineral Spirit
6	4-5	Suitable	5	4	5	4	4	3	4	5

\* The colors above have been generated electronically and should therefore not be used for comparison purposes. The colors are meant to give a first impression of the colorant shade.  
The information contained herein is based on our state of knowledge. Our technical advice (whether verbal, in writing or by way of trials) is solely given to the product indicated and constitutes no guarantee of particular quality. It is the duty of the user to ensure that this information is appropriate and complete with respect to the specific use intended